

GTX™ Limited 325

The standard for touring performance.



- White Pearl Premium
● Teal Metallic

Rotax® 1630 ACE™ - 325

ST3® Hull

BRP Premium Audio System

CAPACITY

Rider Capacity	○○○
Weight Capacity	600 lb / 273 kg
Fuel Capacity	18.5 US gal / 70 L
Glove Box	0.8 US gal / 2.9 L
Front Bin	25.3 US gal / 96 L
Storage Capacity Total	26.1 US gal / 98.9 L

DIMENSIONS

Length (bumper to bumper)	135.9" / 345.1 cm
Width	49.2" / 125 cm
Height	44.9" / 114 cm

HULL

Type	ST3 Hull
Material	Fiberglass

FEATURES

- Ergolock™ two-piece seat with stepped design
- Seat strap
- iBR® - Intelligent Brake & Reverse*
- VTS™ (Variable Trim System)
- RF D.E.S.S.™ key
- Watertight phone compartment design
- Wide-angle mirrors
- Handle grips with palm rest
- Footwell carpets
- Tilt steering
- Ski tow eye

ROTAX ENGINE

1630 ACE - 325

Model	GTX Limited 325
Horsepower	325 hp
Intake System	Supercharged with external intercooler
Displacement	1,630 cc
Cooling	Closed-Loop Cooling System (CLCS)
Reverse System	Electronic iBR
Fuel Type	91 octane (premium gasoline)
Throttle System	iTC™ (Intelligent Throttle Control)
Exhaust System	D-Sea-Bel™ system

GAUGE

Type of Gauge 10.25 in. touchscreen display

Main Functions	• BRP Connect	• VTS
	• Music	• Fuel consumption
iTC System - Mode	• Navigation	• Fuel autonomy
	• Bluetooth* connectivity	• Water temperature
	• Speedometer	• Depth finder
	• RPM	• Vehicle hours
	• Clock	

Eco®, Sport, Speed Regulator & Slow Speed Mode

WEIGHT

Dry Weight 849 lb / 385 kg

WARRANTY

BRP limited warranty covers the watercraft for one year.

*Electronic brake, neutral and reverse.

SEA-DOO®

Key Features

- iDF - Intelligent Debris-Free System
- Direct-access front storage
- 10.25 in. touchscreen display
- 2 pop-up cleats
- Hydraulic steering damper
- Large swim platform with LinQ® attachment system
- **Limited Package:**
 - USB port
 - Watercraft cover
 - Storage bin organizer
 - Knee pads
 - Exclusive coloration and more



○ White Pearl Premium



● Teal Metallic

Feature Highlights



Limited Package

USB port, watercraft cover, storage bin organizer, knee pads, exclusive coloration and more.



BRP Audio - Premium System

A factory-installed, truly waterproof Bluetooth* audio system for an extra dose of fun and entertainment on the water.



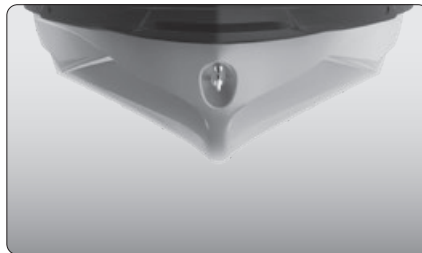
iDF - Intelligent Debris Free System

An innovative, industry-first system that allows you to free your pump of weeds and debris with intuitive quick-activated controls.



Rotax 1630 ACE - 325 Engine

The Rotax 1630 ACE - 325 is Sea-Doo's most powerful PWC engine from factory. With its 325 hp, this engine delivers incredible acceleration and power thanks to innovative engineering for uncompromised offshore performance.



ST3 Hull

An innovative hull that sets the benchmark for rough water handling, stability, and offshore performance.



10.25 in. Touchscreen Display

Bring your on-water experience to another level with this premium and elegant touchscreen display developed specifically for Sea-Doo riders. Enjoy enhanced connectivity and intuitive features including ride statistics, a compass, media control, marine navigation with the BRP GO! app and much more.